



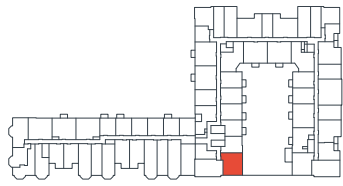
THE  
**VALE**  
~~~~~  
AT THE PARKS

**2N<sup>0</sup>**  
ANSI

**THE VALE IS YOUR  
CANVAS FOR ARTFUL  
LIVING AT THE PARKS**



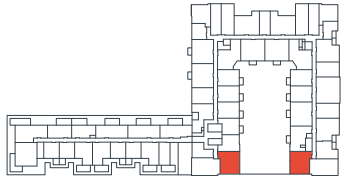
6800 Georgia Avenue NW  
Washington, DC 20012  
202.519.3885



3RD FLOOR



4TH FLOOR



5TH FLOOR



6TH FLOOR

RESIDENCE NUMBER

MOVE-IN DATE

MONTHLY RENT

Square footages are approximate and may vary slightly. Rental rates, availability, deposits, and specials are subject to change without notice.

Pursuant to the District of Columbia Inclusionary Zoning program, income restricted units are available at this development. Please contact the Department of Housing and Community Development at [www.dhcd.dc.gov](http://www.dhcd.dc.gov) regarding the availability of such units and requirements for registration in the Inclusionary Zoning program.

## 2 BEDS / 2 BATHS

873 SF

ANSI **2N<sup>0</sup>**

